

Mystic Crossroads Gathering

Camp in the lovely and secluded forest of Cloudcroft (Upper Fir Group Area). Reserved site with restricted access. Plans include: Communal meals, Opening/Closing rituals, Workshops (Pagan Death & Dying, Potions, Italian Witchcraft, Chants & Songs, Activities for Witchlets, and More!), themed rituals on Fri. and Sat. nights, Bardic and Drumming Circles, vendors, and FUN! Tent and RV spaces available. Site has running water, 2 large BBQs, large sheltered area for eating/workshops, fire ring, locked entrance gate, 2 sets of enclosed toilets. Motel/Hotel accommodation information is also available.

Early registration = \$20/adult (thru 12/31/07), Pre-registration is \$25 (from 1/08 - 3/31/08), and Registration of \$35/adult afterwards. Rates include camping fee, workshops, and circles – rates do NOT include all food. Each adult will be asked to bring food items (or contribute money) for one or more meals to prepare & serve. Cooking and cleanup duties assigned & rotated.

Event is sponsored by the Temple of Hekate's Torch, a Strix Traditional Temple in Roswell, NM



In Darkness, Light



Temple of Hekate's Torch
c/o Tarot By Olympias
POB 8327
Roswell, NM 88202

4th Annual Celebration at the Mystic Crossroads in Cloudcroft, NM 6/19/08 - 6/21/08



***Hosted by the Strix
Temple of Hekate's Torch***

Phone: (505) 624-2126 (messages)
www.tarotbyolympias.com
Email: olympiasbc@aol.com





Gather in the Clouds

An annual camp out open to Pagans of all traditions and paths. The Upper Fir Group Area campsite is semi private, suitable for 120 people tent camping and some RV parking, with 2 grill BBQs, 2 sets of enclosed toilets, running water, large covered pavilion with tables, fire ring...nestled in the mountains of Cloudcroft, New Mexico.

The Family-Friendly weekend plans include rituals, workshops, networking and plenty of time to commune with Nature.

Meals and clean-up are communal and everyone pitches in.

The weekend event is hosted by the Thessalian Strix Temple of Hekate's Torch.

Temple of Hekate's Torch

POB 8327
Roswell, NM 88202

Phone: (505) 624-9850

Olympiasbc@aol.com

www.tarotbyolympias.com

Schedule of Events

There will be several different presentations and workshops from many different Pagan/Witch traditions throughout the weekend. Workshops include: Songs & Chants, Beginning & Intermediate Potions, Pagan Living & Dying, Introduction to Bardic, Divination, Witchlet Arts & Crafts, and *MORE!!!*

The main ritual on Saturday is the Thargelia in honor of Apollo. This pagan ritual enlists the aid of a Priest/Priestess who volunteers for the role of *Pharmakos*.

Thursday

Early arrivals starting at 1:00pm, Camp setup and energy raising, Altar Setup, Evening Prayers; Dinner is on your own! Dessert will be supplied, along with coffee and cocoa (every day and night), Divination/Readings, Bardic and Drumming Circles.

Friday

Cold Breakfast, Morning Prayers, Vendors, Workshops, Choosing the *Pharmakos*, Wild Hunt, Dessert, Bardic and Drumming Circles.

Saturday

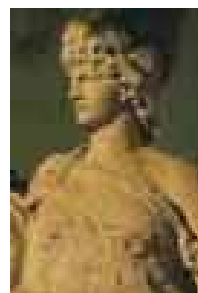
Full breakfast, Morning Prayers, Vendors, Workshops, and contributing to Sacred Meal.

Main Ritual: Thargelia in honor of Apollo and Artemis. Roast Pork dinner, Dessert, Bardic (the continuing saga of the BARE God) and Drumming Circles.

Sunday

Cold Breakfast and Left-Overs, Morning Prayers

Camp breakdown - everyone assists
Closing ritual; Out by 12:00 (Noon)



Sign-up Form

<i>Per Person Sign up for:</i>	<i>Price</i>
<input type="checkbox"/> Adult <u>Early-registration</u> (till 12/31/07)	\$20.00
<input type="checkbox"/> Adult <u>Pre-Reg.</u> (1/1/08 - 3/31/08)	\$25.00
<input type="checkbox"/> Children 8-12 yrs (till 3/31/08)	\$10.00
<input type="checkbox"/> Adults Reg (<u>as of 4/1/08</u>)	\$35.00
<input type="checkbox"/> Children 9-13 (as of 4/1/08)	\$15.00
<input type="checkbox"/> Children 5-8 (All registrations)	\$3.00
<input type="checkbox"/> Day Trippers (per day)	\$5.00
<input type="checkbox"/> Additional Vending fee for event	\$50.00

Name

Address

Phone

E-mail

Method of Payment: Make checks and MOs payable to Cone Wilson (Payments are also possible via PayPal)

<input type="checkbox"/> Check	<input type="checkbox"/> Money Order
<input type="checkbox"/> Cash	<input type="checkbox"/> Prefer information for a motel room (additional costs will apply). Day Tripper rates apply and you will be asked to bring food items).
Total Amount Sent _____ \$	

Signature

Please Complete the Personal Information Sheet (found at www.tarotbyolympias.com) and return with your reservation

Reimbursements are not guaranteed with a cancellation.